

Sustainable Resources Institute, Inc.



July 27, 2017

Dear Prospective Site Preparation Project Bidder,

The Sustainable Resources Institute, Inc. (SRI) is accepting bids on the Site Preparation Project on the Lake Louise Timber Sale in the Washburn Ranger District on the Chequamegon - Nicolet National Forest. This work is being conducted as part of a Stewardship Agreement, whereby the SRI administers the site preparation contract using funds resulting from timber sales. All communications, inspections, and supervision related to this work will be coordinated by SRI staff or representatives.

The purpose of the site preparation project is to create plantable spots for trees, which will be planted in the spring of 2018.

The site preparation specifications and bid sheet included in this package can also be accessed at www.sustainableinc.org

Any questions regarding the contract should be addressed to the Sustainable Resources Institute at 906.875.3720. Bids are due no later than 12:00 PM on August 31, 2017 according to the instructions on the bid sheet.

Thank you for your interest in the Site Preparation Contract.

Kari Divine
Sustainable Resources Institute
1353 W Highway US 2, Suite 2
Crystal Falls, MI 49920
kari@sustainableinc.org

1353 W. Highway
US2, Suite 2
Crystal Falls, MI
49920

Phone:
877-284-3882

Fax:
906-875-3724

Site Preparation Project Highlights

This site preparation contract is part of a Stewardship Supplemental Project Agreement between Sustainable Resources Institute, Inc. and the USDA Forest Service. Funds generated from timber sales will be used to award this contract.

The purpose of the site preparation project is to create plantable spots for trees, which will be planted in the spring of 2018.

- Project Area: On the Chequamegon – Nicolet National Forest; Washburn District
- This contract includes site prep for under planting on 19.4 acres and site prep for full planting on 80.9 acres, totaling 100.3 acres.
- The successful bidder will be required to submit for approval an operating plan that outlines the schedule of performance prior to contract signing. Work must be completed between October 1 and December 31, 2017.
- Payment for work will be upon completion of the project and approval by Sustainable Resources Institute, Inc.
- A pre-work meeting is required.
- Successful Bidder will be announced following award of the Contract. Bid results for Stewardship contracts are not published on the Forest Service website.
- Bids are due no later than 12:00 PM on August 31, 2017.
- This package can also be downloaded at www.sustainableinc.org.
- Direct questions to the Sustainable Resources Institute, 906.875.3720

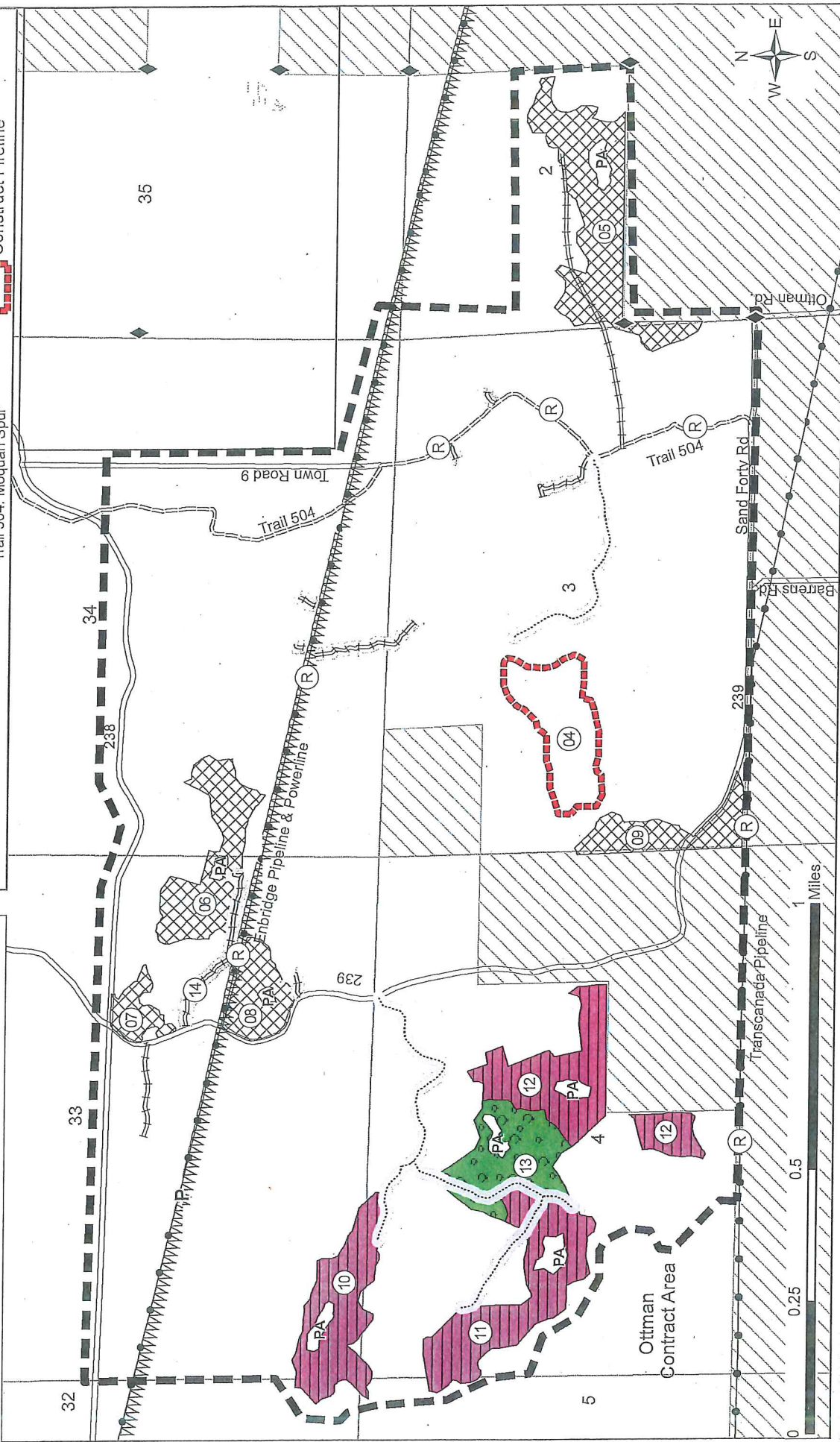
Payment Unit	Activity	Est. Acres
10	Site prep for full planting	22
11	Site prep for full planting	28.4
12	Site prep for full planting	30.5
13	Site prep for under planting	19.4
Total		100.3

Lake Louise Reforestation Activities

Lake Louise SPA
 Washburn Ranger District
 Chequamegon-Nicolet National Forest
 T47N, R6W, S 2, 3, 4, 5 and
 T48N, R6W, S 32, 33, & 34 - Bayfield County

Legena

- Project Area Boundary (C)
- Non-USFS Ownership
- Pipeline
- Powerlines
- Protection of Known
- Survey Monuments
- Aspen Site Prep
- Site prep for full plant
- Site prep for underplant
- Red Pine 778 tpa
- White Pine 544 tpa
- Construct Fireline
- Payment Unit 14 (G24)
- Re-Construct Temp Rd (G48)
- Payment Unit 14 (G24)
- New Temp Rd Constr. (G48)
- New Temp Rd Constr. (G48)
- Existing Transportation System
- Trail 504: Moquah Spur



Site Preparation for Planting Project Specifications

This site preparation contract is part of a Stewardship Supplemental Project Agreement between Sustainable Resources Institute, Inc. and the USDA Forest Service. Funds generated from timber sales will be used to award this contract.

Payment Unit	Activity	Est. Acres
10	Site prep for full planting	22
11	Site prep for full planting	28.4
12	Site prep for full planting	30.5
13	Site prep for under planting	19.4
Total		100.3

Site prep for under planting

The objective is to create plantable spots for trees. Expose bare mineral soil on the site to ensure proper planting of seedlings and provide a competition free area around the seedling. Typical site prep for underplanting would result in scalps that are scattered across the stand and provide 544 plantable spots per acre. This is commonly done with the use of a Bracke Sacrifier, or use of a rock rake or Salmon blade is also used with an exposure of mineral soil across 40-50% of the site. Work can be accomplished with the equipment mentioned above, or other mechanized equipment shall be used only by agreement with the Sustainable Resources Institute.

Site prep for full planting

The objective is to create plantable spots for trees. Expose bare mineral soil on the site to ensure proper planting of seedlings and provide a competition-free area around the seedling. Site prep for full planting should result in trenches across the stand and provide 778 plantable spots per acre. Rows should be a minimum of 7 feet apart (the objective of this spacing is to be able to remove one single row to create harvest access in the future).

This is commonly done with the use of a Disc trencher or fire plow, creating rows for the seedlings to be planted in. In addition to the trenching, the site is typically roller chopped (use of a large drum towed behind large piece of equipment to knock down and chop up competing brush and trees) slash heights and prevent debris from getting in the trenches. It also levels saplings and seedlings across the site and sets everything to ground level giving planted seedlings good full sunlight. Another common method is to use a power disc trencher, which is capable of creating clean plantable trenches. Work can be accomplished using the equipment mentioned above, or other mechanized equipment shall be used only by agreement with the Forest Service.

SITE PREPARATION BIDDING SHEET

Due by: 12:00 PM on AUGUST 31, 2017

Payment Unit	Activity	Est. Acres	Payment Unit Price
10	Site prep for full planting	22	
11	Site prep for full planting	28.4	
12	Site prep for full planting	30.5	
13	Site prep for under planting	19.4	
Total Bid Price			

BY 12:00 P.M. CST – AUGUST 31, 2017 - SEND BIDS TO:

Sustainable Resources Institute, Inc.

Attn: Site Preparation Project
1353 W HWY US 2, Suite 2
Crystal Falls, MI 49920
(Fax) 906.875.3724 or
kari@sustainableinc.org

Signed by: _____ Address: _____

Printed Name: _____

Title: _____ Phone: _____

Representing: _____ E-mail: _____

SRI reserves the right to reject any and or all bids.